

Návrh demonstračního panelu

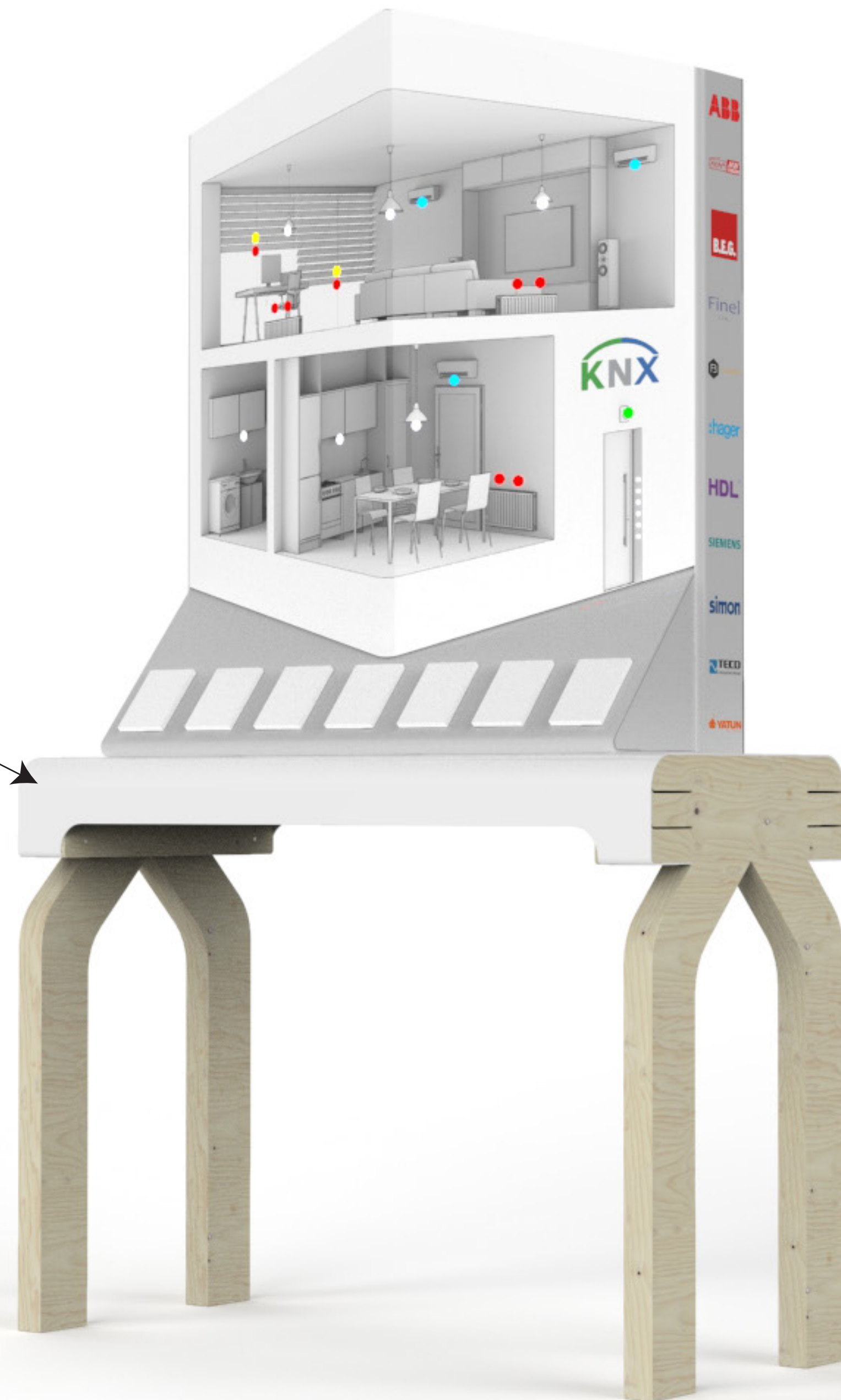
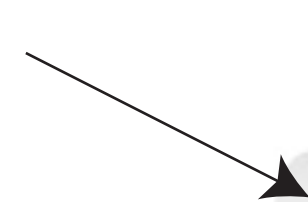
podstavec

Dominik Lob

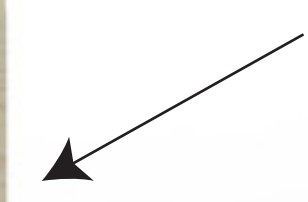
21.6. 2020

Design

natíraný hliníkový plech



smrkové dřevo



Design



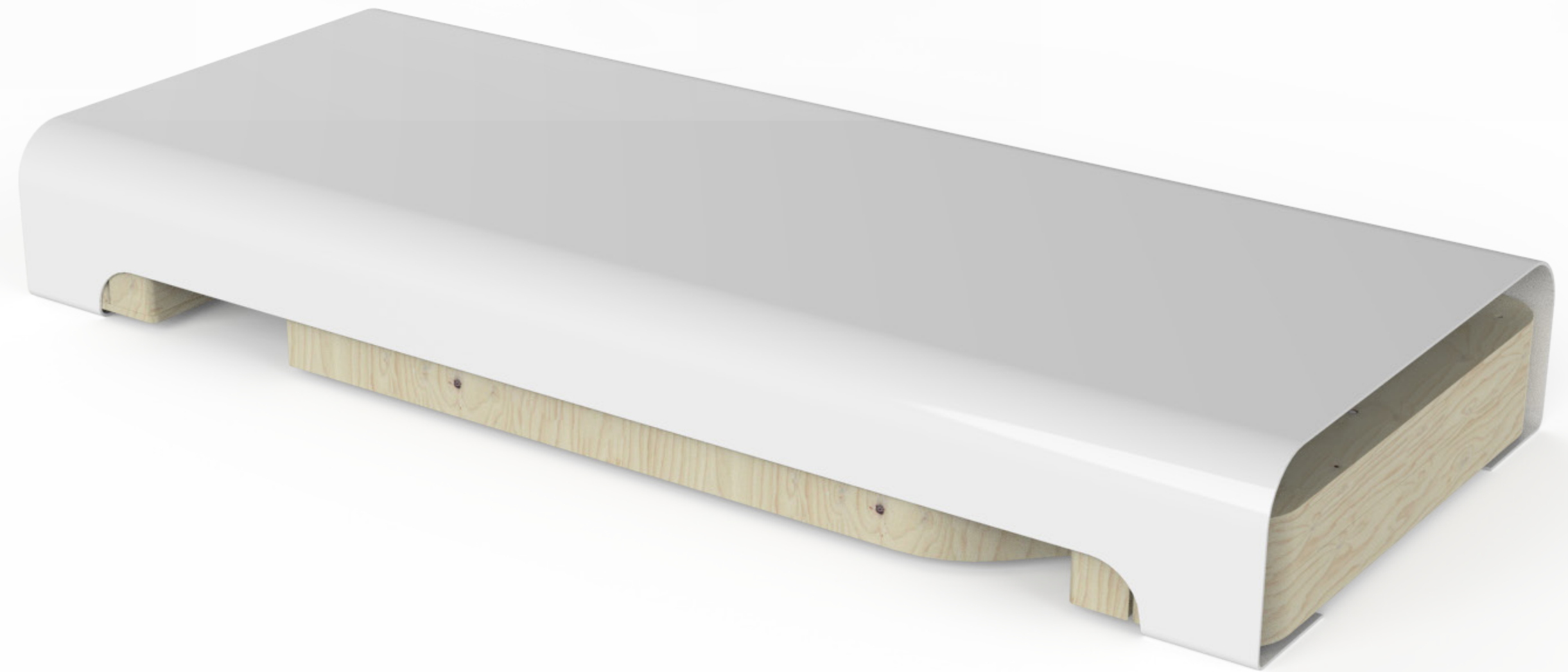
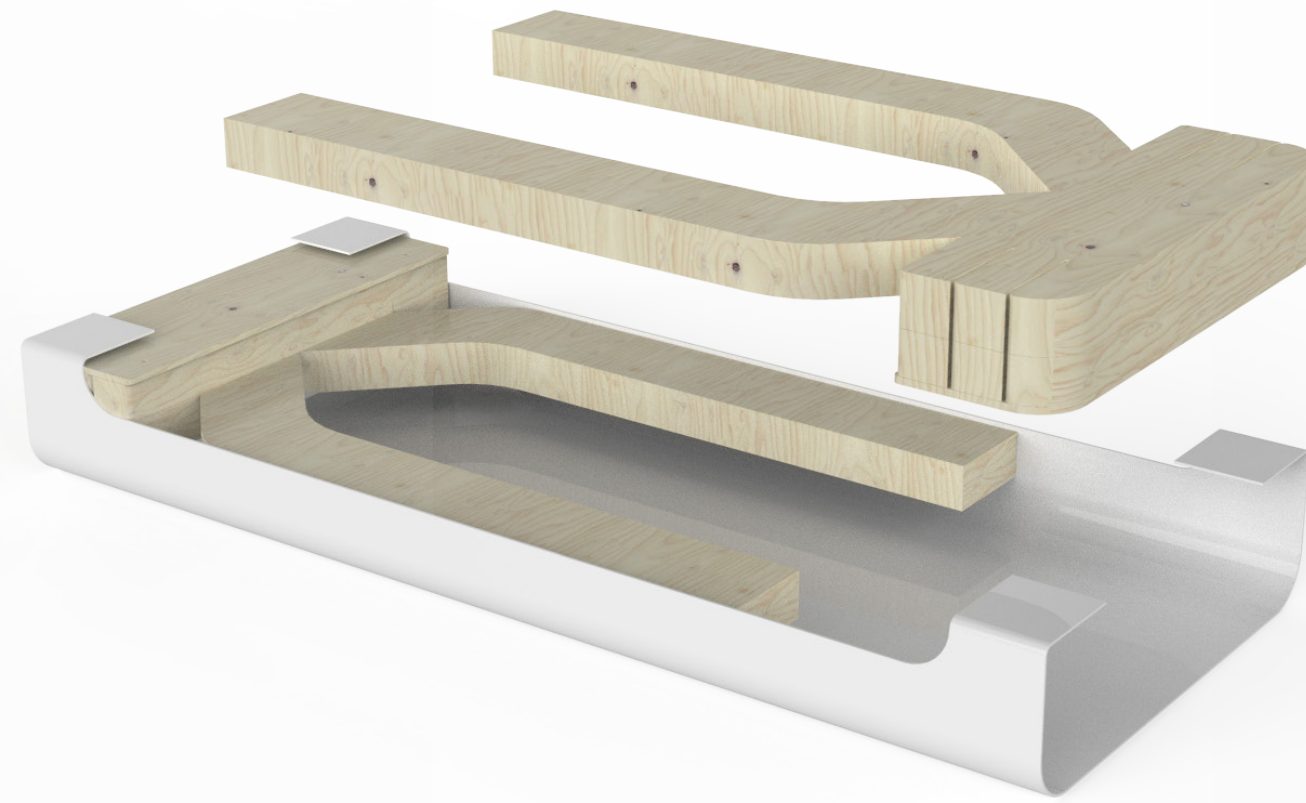
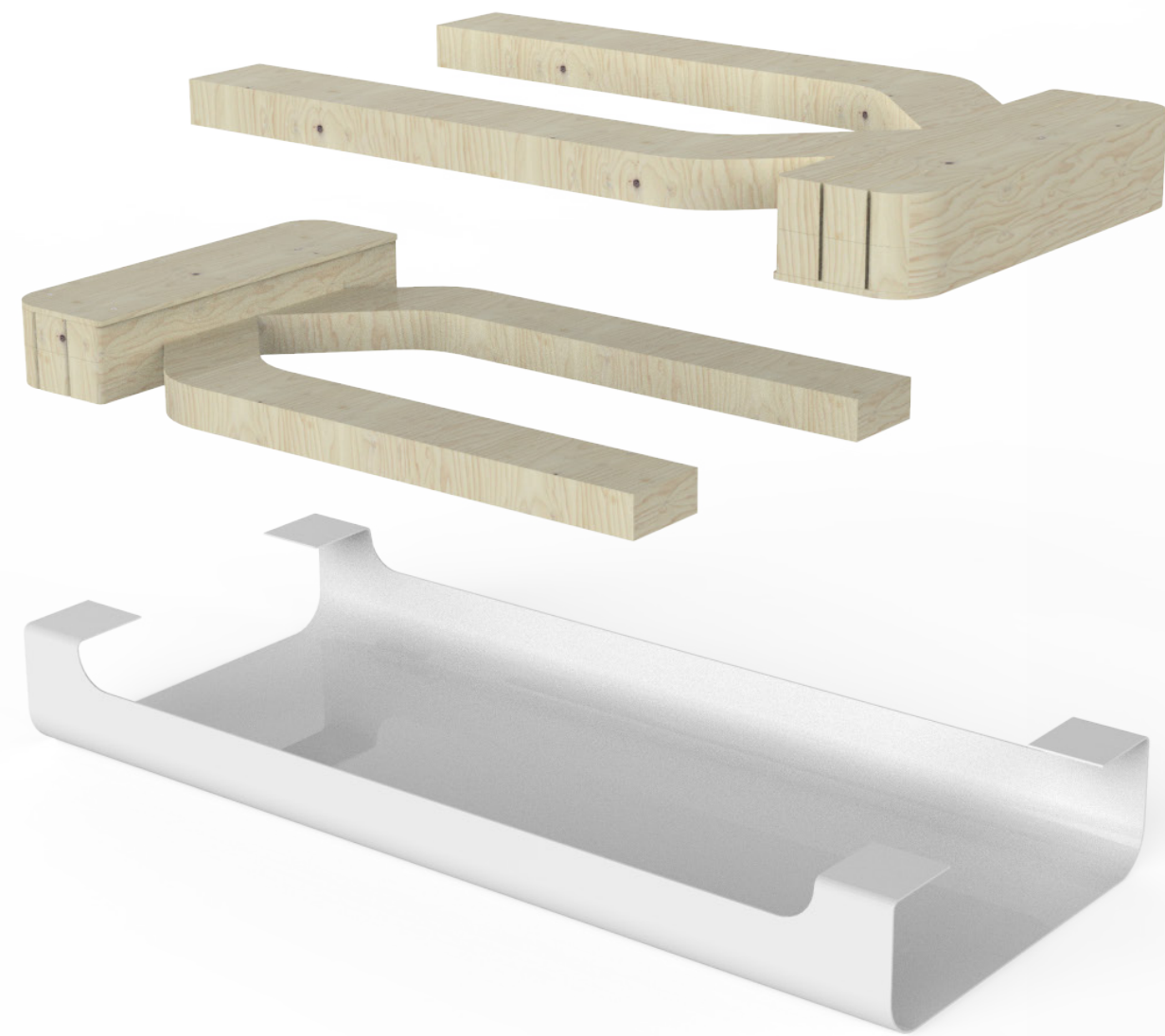
Princip



Konstrukce



Transport



celková hmotnost: cca. 20 kg

plech: 7 kg, nohy: 13 kg

možnost odlehčit nohy (užší, tenčí profil)

Nastavitelnost

